

Figure 1.
SAT-9 Reading Percentile Scores from Sample Schools with Mostly Native
English-Speaking Students (<3% LEP).
1998, 1999, 2000 ($N = 30$)

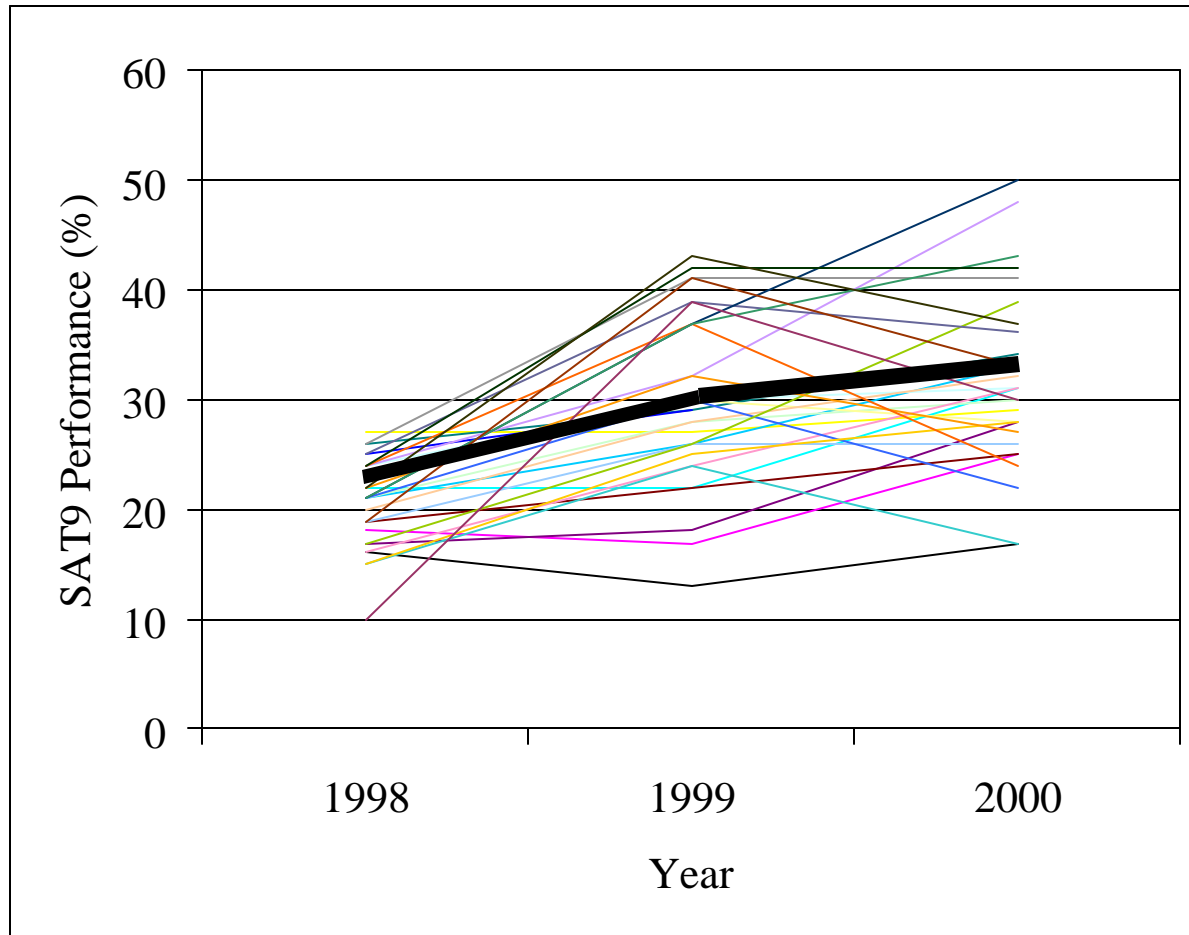


Figure 2.
SAT-9 Reading Percentile Scores from Sample Schools with Mostly LEP Students,
1998, 1999, 2000 ($N = 25$).
Data are for LEP students only

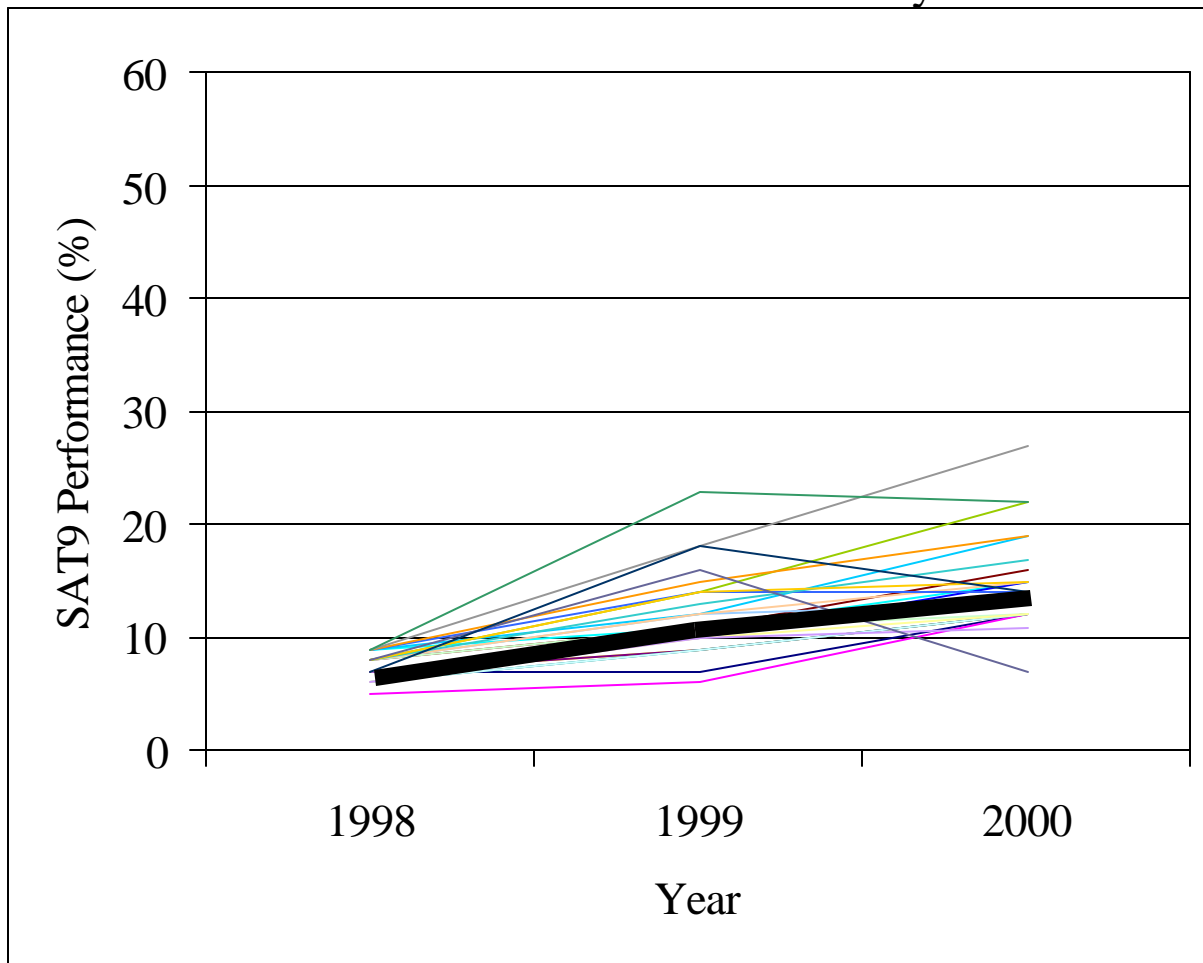


Figure 3.
SAT-9 Math Percentile Scores from Sample Schools with Mostly Native English-Speaking Students (<3% LEP).
1998, 1999, 2000 (N = 30)

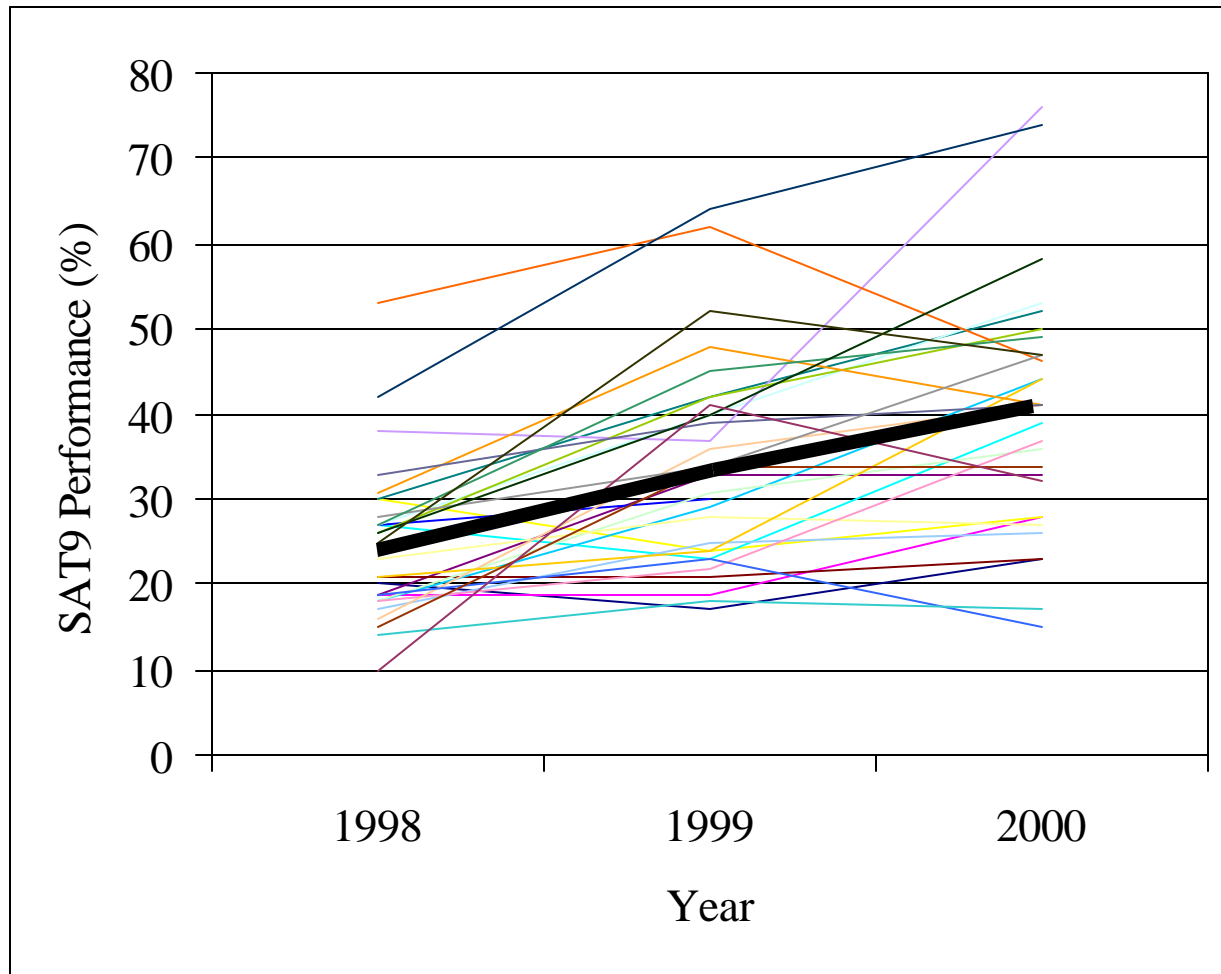


Figure 4.
SAT-9 Math Percentile Scores from Sample Schools with Mostly LEP Students,
1998, 1999, 2000 ($N = 25$).
Data are for LEP students only

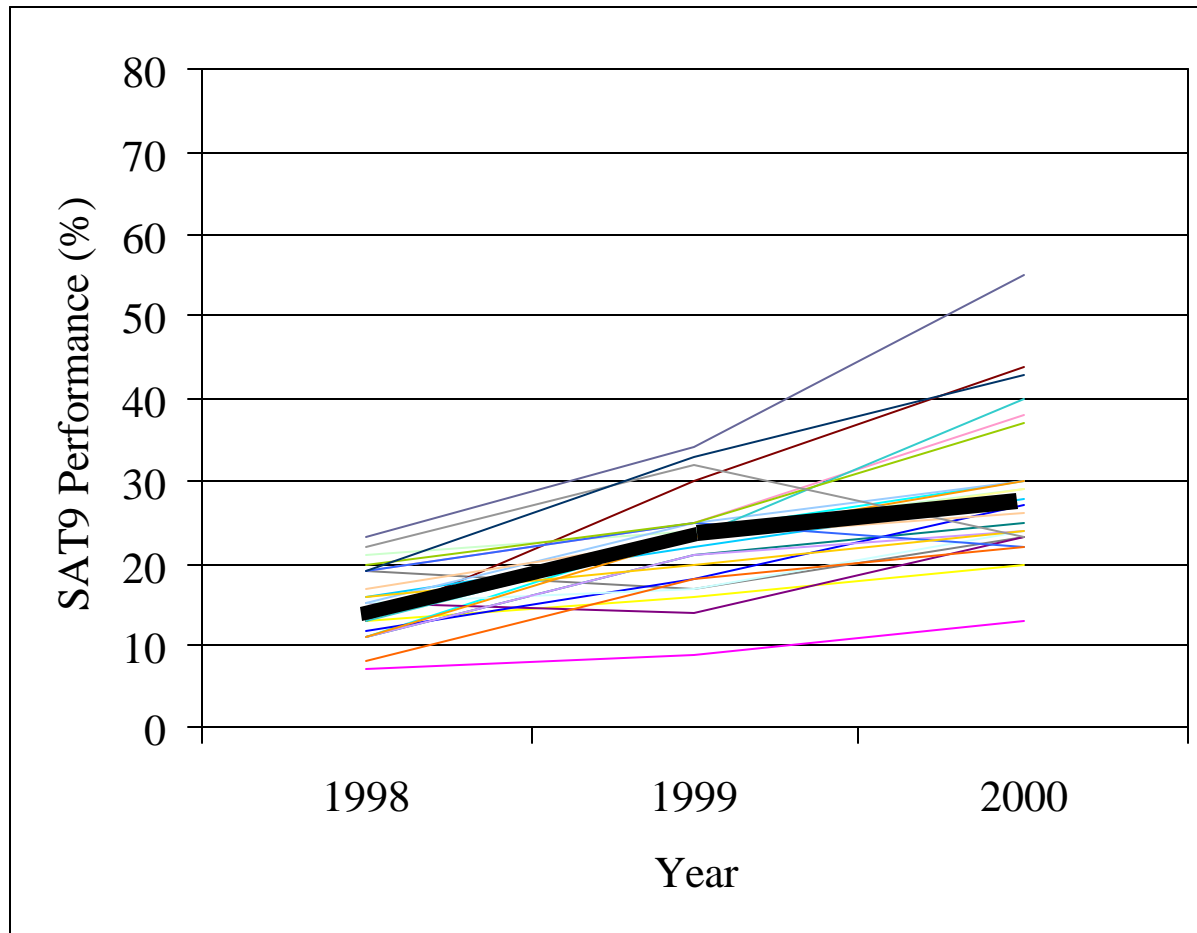


Figure 5.
SAT-9 Language Percentile Scores from Sample Schools with Mostly Native
English-Speaking Students (<3% LEP).
1998, 1999, 2000 (N = 30)

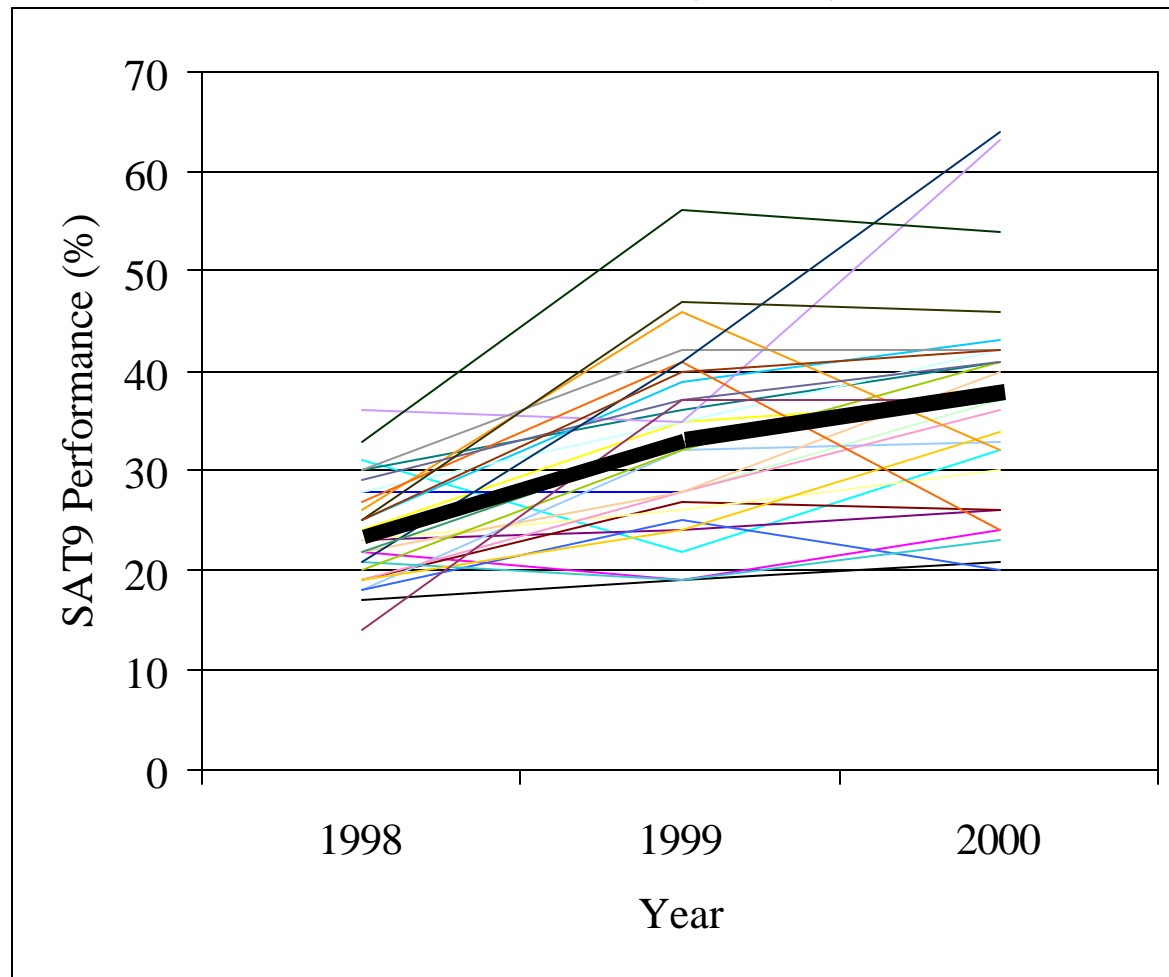


Figure 6.
SAT-9 Language Percentile Scores from Sample Schools with Mostly LEP
Students, 1998, 1999, 2000 ($N = 25$).
Data are for LEP students only

